



**2021-2022 ANNUAL REPORT
LIVE UNITED**

TABLE OF CONTENTS

MISSION STATEMENT.....	1
BOARD OF DIRECTORS.....	2
COMMITTEES.....	3
FINANCES.....	4
INVESTMENTS.....	5
VOLUNTEER ENGAGEMENT.....	6
ALWAYS UNITED.....	7
YOUNG LEADERS UNITED.....	8
SMALL BUSINESS UNITED 365.....	9
GRANITE SOCIETY/PLANNED GIVING.....	10
LEADERS IN GIVING.....	11
SPONSORSHIPS.....	12

MISSION

To improve people’s lives by mobilizing the caring power of Central Minnesota.

POSITION

United Way of Central Minnesota connects resources to accelerate community wide solutions.

BOARD OF DIRECTORS



Ryan Gerads - Chair
Lathrop GPM



Heather Hoskins -
Secretary
GeoComm



Jasper Asplin - Treasurer
CliftonLarsonAllen



Trevor Akervik - Past Chair
Marco, Inc.



Peter Coborn
Corborn's, Inc.



Ryan Daniel
Metro Bus



Adam Heathcote
Bergan KDV



Jennifer Lawrence
Vye



Bob Mahowald
Mahowald Insurance



Lisa Maurer
Bremer Bank



Matt Nikodym
UBS Financial Services



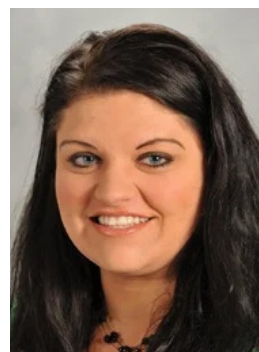
Scott Palmer
CentraCare



Joy Plamann
CentraCare



Mike Schlough
Park Industries



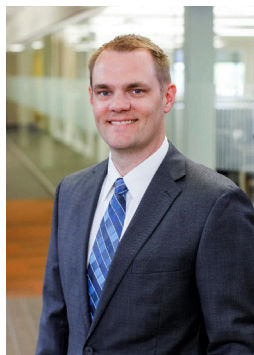
Amber Schoenherr
Marco, Inc.



Donna Scholer
Microbiologics



Malik Stewart
College of St. Benedict



Steve Windfeldt
Preferred Credit Inc.

COMMITTEES

Workplace Giving Committee

Heather Hoskins - Chair
Tara Gronhovd
Dusty Kerksen
Matthew Kunkel
Bob Mahowald
Mike Schlough
Kimberly Shoberg

Directors Council

Scott Anderson
Tammy Biery
Nancy Cashman
Ann Cofell
Gail Cruikshank
Leigh Ann Davis
Linda Earl
Lori Eich
Greg Gack
Rachel Garaghty
Shannon Harter
Charles Hempeck
Christy Isakson Benesh
Deb Johansen
Jackie Johnson
Nikki Kelar
Brad Kelvington
Peggy LaDue
Carol Lundquist
Mary Mackedanz
Bobbie Mattison
Joni Medenwald

Carole Mersinger
Signe Miller
Rick Nelson
Colleen Orne
Conni Orth
Steve Pareja
Alexis Rian
Janene Riedeman
Peggy Rieland
Cara Ruff
Georgann Rumsey
Heather Sabin
Lori Schultz
Carol Smith
John Smith
Jerry Sparby
Carrie Stang
Renae Sternke
Melissa Stricherz
Mary Swingle
Lori Vrolson
Jennifer Wucherer

Finance Committee

Jasper Asplin
James Bainbridge
Lora Czech
Ryan Gerads
Jason Neumann
Gretchen O'Brien
Larry Olness
Brittany Prellwitz
Jeff Przybilla
Chris Stanz
Jayme Woehl

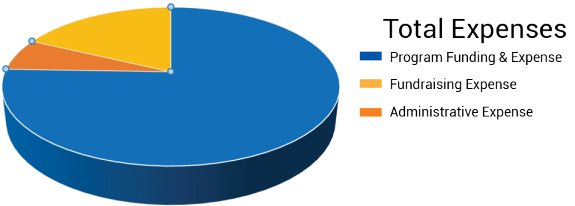
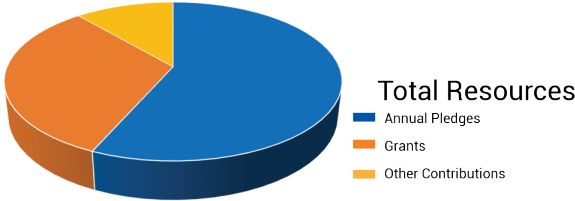
*Because
change doesn't
happen alone.*

FINANCES

Visit unitedwayhelps.org to view the current 990 and audit. Information contained in these forms include a summary of the organization's activities, assets, receipts, expenditures, and compensation of directors, officers, and certain employees.

2021-2022 Financial Summary

Annual Pledges	2,328,084
Grants	1,321,126
Other Contributions	463,416
Service Fees on Designations	83,458
Less: Estimated Pledge Shrinkage	(93,123)
Less: Donor Designations	(160,505)
Gross Public Support	<u>3,942,256</u>
Investment & Other Revenue (Loss)	<u>(285,176)</u>
Total Resources Available	\$3,657,280
Program Funding & Expense	3,305,966
Administrative Expense	285,543
Fundraising Expense	784,891
Transfer to Reserves	(719,120)
Total Resources Expended	3,657,280



Visit unitedwayhelps.org to view the current 990 and audit. Information contained in these forms include a summary of the organization's activities, assets, receipts, expenditures, and compensation of directors, officers, and certain employees.



INVESTMENTS

EDUCATION

- **Align After-School Help** - Align Learning Center
- **Youth Mentoring** - Big Brothers Big Sisters of Central Minnesota
- **CareerSTART Workforce Development Program** - Boys & Girls Clubs of Central Minnesota
- **KIDSTOP & Club Scholarship Program** - Boys & Girls Clubs of Central Minnesota
- **Rise Up Youth Leadership Initiative** - Brothers & Sister United International
- **CareerONE** - Career Solutions
- **Building a SPACE for African Students' Success** - Center for African Immigrants and Refugees Organization
- **Mentoring & Life-Skills Development** - Central MN Youth for Christ
- **Child Care Support** - Milestones
- **Equity Through Play** - Great River Children's Museum
- **Youth Identity Development via Theatre Education** - GREAT Theatre
- **"Cats and Rats; Reading and Math!"** - Local Education & Activities Foundation (LEAF)
- **Positive Youth Development** - Promise Neighborhood of Central MN
- **Kindergarten Transition Services to Enrolled Families** - Reach-Up Inc.
- **Dreamline Student Success Program** - The Sanneh Foundation
- **Building Equity through Youth Leadership** - Yes Network
- **Ready 2 Win** - Too Much Talent

FINANCIAL STABILITY

- **Financial and Housing Counseling Program** - Catholic Charities of the Diocese of St. Cloud
- **Homeowner Services and Education** - Central Minnesota Habitat for Humanity
- **Child Care Liaison** - Milestones
- **Immigrant Services** - Friends of Career Solutions
- **P.R.O.F.I.T (Providing Real Opportunities for Financial Independence and Training)** - Independent Lifestyles
- **Building Financial and Housing Stability while Supporting Healthy, Stable, Safe Communities** - Mid-Minnesota Legal Aid-St. Cloud
- **Financial Education/Counseling & Volunteer Income Tax Assistance** - Tri-County Action Program
- **Emergency Travel Voucher Program** - ConnectAbility of MN

SAFETY NET

- **Domestic Violence Shelter** - AnnaMarie's Alliance
- **Emergency Services (Food Shelf & Financial Assistance), DOMUS, Youth House, Senior Dining, Meals on Wheels, SHY** - Catholic Charities
- **Youth Meal Program** - Boys & Girls Club of Central Minnesota
- **Sexual Assault Advocacy & Intake** - Central Minnesota Sexual Assault Center
- **Senior Linkage Line** - Central Minnesota Council on Aging
- **Food Shelf** - CROSS Center Food Shelf of Benton County
- **Crisis Nursery** - Lutheran Social Services
- **Church of the Week** - Place of Hope Ministries
- **Emergency Shelter and Meal program** - Salvation Army
- **Home Delivered Meals** - St. Cloud Hospital
- **Safety Around Water Instruction** - St. Cloud Area Family YMCA

HEALTH

- **SMART Moves Prevention Programs** - Boys & Girls Clubs of Central Minnesota
- **Central MN Foster Grandparent Program** - Catholic Charities of the Diocese of St. Cloud
- **CVT St. Cloud** - Center for Victims of Torture
- **Mental Health Counseling for Dementia Patients, Partners, Caregivers, & Family Members** - Central Minnesota Dementia Community Action Network
- **Social and Community Engagement** - Central MN Council on Aging
- **Children's Targeted Case Management** - Central MN Mental Health Center
- **St. Cloud Area Child Response Initiative** - Central MN Mental Health Center
- **Whitney Wellness & Healthy Aging: Reducing Social Isolation & Loneliness** - City of St. Cloud Whitney Senior Center
- **Kindergarten Mental Health Skills** - St. Cloud Area School District 742
- **Expanding Support to Caregivers to Enhance Children's Mental Health** - Ellison Center
- **Spirited Adventures** - Greater Minnesota Family Services
- **Parent Enrichment** - St. Cloud Area Family YMCA
- **Children's Behavioral Health** - The Village Family Service Center



United Way
of Central Minnesota

VOLUNTEER ENGAGEMENT

Day of Caring Highlights

Over 400 volunteers completed 63 projects for 25 area nonprofits. more than 1,460 hours of service with an estimated dollar value to our community of \$42,000!

That is truly amazing! We are thankful that you participated to help show our community that you care! It takes everyone in the community working together to create a brighter future.



School Supply Drive

12 businesses ran a drive to support our kids in school with school supplies, 70 Impacks kits, over \$2500 raised 5 school districts and several community organizations received donations.



Day of Action Highlights

During Days of Action, United Way of Central Minnesota partnered with Central Minnesota Habitat for Humanity. Once a week throughout June, volunteers provided support building the Tiger Build 6 in St. Cloud.



ALWAYS UNITED

Always United, formerly Retire United, directly addresses the older adult workforce population in our communities. By working with our workplace giving businesses, we are able to create a transition-type program for retirees who wish to remain tethered to our cause and efforts. It's both an opportunity for individuals to participate in volunteer projects and support programs vital to the entire community. From a company's perspective, it's a chance to continue to reward loyalty and culture even through retirement.

Committee Members

Lisa Maurer - Chair
Karen Ahles
Karen Belmont
Elizabeth Brunsvold
Brenda Canning
Ann Doyscher-Domres
Deb Fasen
Sandy Johnson
Stephanie Jussila
Pam Koztenmacher
Karl Leslie
Jane Marsden
Lisa Moschkau
Joyce Schlough
Scoop Reif



Our goal is to always ensure our volunteers and supporters know of the opportunities presented and how we can best raise our hands together to continue to advocate and create change.

Interested in joining? Email info@unitedwayhelps.org for more information

YOUNG LEADERS UNITED

Our goal with Young Leaders United is to connect young people to the causes and interests they have a desire to be part of and introduce them to the greater community in which they live, work, and raise families. The group of 35 and under aged people support the work of United Way Central Minnesota through fundraising, volunteer projects, and networking events. This dynamic, tireless group is making lasting change across Central Minnesota and having fun along the way. It's inspiring and a great reminder of what happens when we realize the collective power of network and shared vision.

Committee Members

Sophie Almquist
Amelia Barkley
Benjamin Barrett
Paige Baum
Adam Braeglemann
Becka Clobes
Alex Holsman
Vanessa Kanaventi
Hannah Mayhew
Hannah Miller
Matthew Odette



YLU events have included adventures like Canvas Painting for a Cause, Cribbage for a Cause, Kick Summer Hunger Kickball Tournament, Toys for Tots, Backpack Bash, and much more.

Interested in joining? Email info@unitedwayhelps.org for more information

To live better,
we must **LIVE UNITED.**

SMALL BUSINESS UNITED 365

Small Business United 365 (SBU365) is a group of local small business owners who are committed to investing in ongoing, impactful, and meaningful work in Central Minnesota through United Way. While United Way of Central Minnesota has been bringing business, individuals, and organizations together to advance the common good for more than 50 years, a new initiative is starting in an effort to make philanthropy easier and more rewarding for small businesses throughout Central Minnesota.

Committee Members

Nate Brown
Kelly Cook
Sara Cuperus
Chris Dolney
Chris Duke
Brenda Eisenschenk
Dana Fischer
Amy Funk
Nathan Goebel
Tara Gronhovi
Kristin Hannon

Michelle Henderson
Brian Jarle
Bri Knowles
Bennie McWilliams
Rhoda Paurus
Mason Schirmer
Sammi Shand
Rachael Sogge
Eileen Theisen
Justin Wampach



Interested in joining?
Email info@unitedwayhelps.org
for more information

GRANITE SOCIETY

The Granite Society is a community of United Way supporters who are making future gifts through bequests, trusts and other life income gifts. These members are committed to the United Way promise: to better the Central Minnesota communities we live in long into the future.

Thank you to these Granite Society members for their legacy gift:

Rick and Helga Bauerly
Jason Bernick
Mark Bernick and Kathleen Crawford Bernick
Dick and Mimi Bitzan
JoAnn Cagle
Pam Christianson
Jason and Lori Eich
Michael and Robin Ferrian
Melinda Gau
Brad and Lisa Hanson
Adam and Tiffany Heathcote (401K for UW)
Mark and JoAnn Henry

Dan Hollenhorst and Juliana Elchert
Murdoch Johnson and Dianne Tuff
Jim and Janet Knoblach
Chris LeDuc and Adam Whitten
Gary and Jane Marsden
James Mueller
Scoop Reif
Jon and Joy Ruis
Christopher Shorba
Kevin and Anita Spellacy
George Torrey
Virgil Truenow

Build Your Legacy

If United Way of Central Minnesota is already in your estate plan or to find out more information about how making a planned gift could benefit you and the community, please call United Way, 320-229-3501.

PLANNED GIVING

Thoughtful, intentional planning helps make a significant difference for future generations and ensures our Greatest Needs fund is a safety net stronghold. Our pillars of focus including education, health, and financial stability all benefit from the care and fortitude of planned giving.

A single endowment or a planned schedule of donations can be tailored to anyone's specific wishes or arrangements. United Way of Central Minnesota's Planned Giving team is honored to assist you and your advisors in the best legacy decision anyone can make. Your planned giving also benefits you and your family by:

- Offering tax reductions
- Conserving wealth
- Increasing income
- Fulfilling philanthropic goals
- Fostering special interests

Committee Members

Keith Finstad
Adam Heathcote
Mike Mavetz
Greg Misterman
Penny Schmitt
Malik Stewart
Bill Worzala



United Way of Central Minnesota's Leaders in Giving members know how important it is to support their community.

They give a minimum of \$1000 each year to support the basic needs, health, financial stability and education of our community.

Their generous giving creates positive, lasting change and improves the lives of everyone.

If you would like to learn more about how you can become a Leader in Giving please contact us at:
info@unitedwayhelps.org.

LEADERS IN GIVING CABINET

Michelle Beeman
Ron Brandenburg
Troy Cameron
Paula Capes
Jenica Cmelik
Laura DeSpain
Hanna Lord
Pat Plamann
Joy Plamann
Greg Reigstad
Bob Sabo
David Schlough
Steve Schwegman
Renee Theisen

SPONSORSHIPS AND IN-KIND

AMAZING-EST RACE

GEOCOMM

Granite
Partners

COMMUNITY CELEBRATION

Granite
Partners

YOUNG LEADERS UNITED

pci | Your Partner
In Success

DAY OF CARING

AFFINITY PLUS
FEDERAL CREDIT UNION

IMAGINATION LIBRARY PROGRESSIVE DINNER

John & Nancy Bartlett

Volunteer Action Center

United Way of Central Minnesota
VOLUNTEER
ACTION CENTER
Sponsored by **Vye**

IN-KIND DONATIONS

Because of in-kind donations we are able to put more dollars toward community issues. Thank you to those companies who provided in-kind support last year.

Coborn's, Inc.

Costco

Diversified Media Resources, Inc.

Scheels

Short Stop Custom Catering

THANK YOU FOR YOUR SUPPORT!

